



# Steam Coil Opposite End Connection

From Name \_\_\_\_\_  
 Company: \_\_\_\_\_  
 Telephone: ( ) \_\_\_\_\_ - \_\_\_\_\_  
 Cell: ( ) \_\_\_\_\_ - \_\_\_\_\_  
 Fax: ( ) \_\_\_\_\_ - \_\_\_\_\_

Date: \_\_\_\_\_  
 Southern Comfort Coil LLC  
 Return Email to: John@southerncomfortcoil.com  
 Return Tel: 888-568-4288 Ext. 3  
 Return Fax: 727-499-9527

#	TAG	QTY	MODEL NUMBER					FIG#	DIST. TUBE
			Tube Dia.	FPI	ROWS DEEP	FIN	FH		
1									
2									
3									
4									

#	DIMENSIONAL DATA												
	CONNECTION				H	I	J	L	M	FLANGES			W
	SIZE	C	D	E						R	S	T	
1													
2													
3													
4													

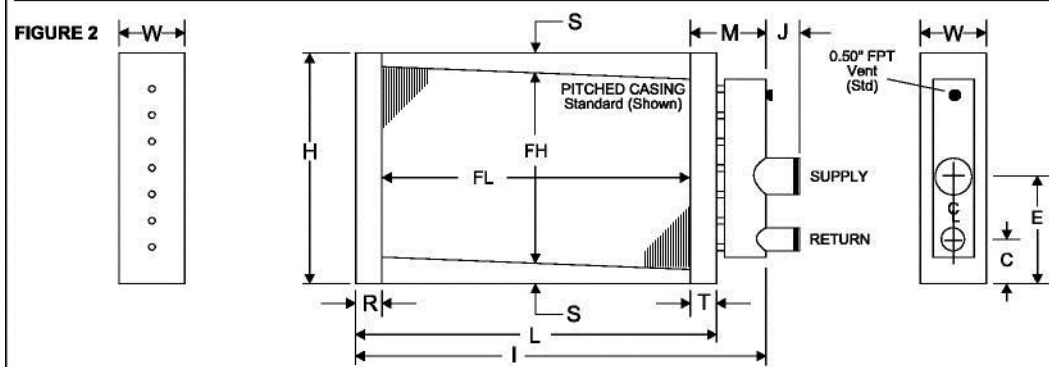
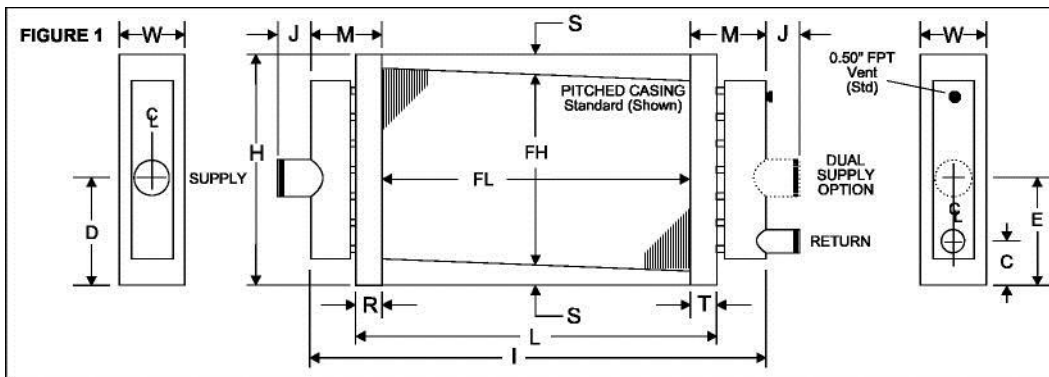
MATERIALS OF CONSTRUCTION				
FINS	AL	CU	CS	St Stl
TUBES	CU	CuNi	CS	St Stl
HEADERS	Cu	CuNi	Carbon Stl	St Stl
CONN	Carbon Stl	Red Brass	St Stl	
CASING	AL	Galvanized Steel		
	CU	Stainless Steel		

GENERAL OPTIONS	
<input type="checkbox"/>	Unpitched
<input type="checkbox"/>	Inverted Flanges
<input type="checkbox"/>	End Plates Only
<input type="checkbox"/>	Slip & Drive
<input type="checkbox"/>	Mounting Holes

GENERAL OPTIONS	
<input type="checkbox"/>	Label Kit
<input type="checkbox"/>	Phenolic Coating
<input type="checkbox"/>	FPT Connections

REMARKS:

- GENERAL NOTES**
1. Tubes are pitched toward return connection when installed for horizontal air flow for FL < 120". Installer must provide pitch on vertical air flow.
  2. Mounting holes are optional. 0.375" diameter holes on 6" centers from the centerline of the fin height and finned length are typical for all flanges. Not available with when S < 1.50" or Inverted Flanges.
  3. Intermediate tube supports are fabricated from heavy gauge stock and supplied per the chart below.
  4. All dimensions are in inches.
  5. Connection Location:  
 C = 2.50" + 0.50"  
 D = 0.125" to 0.5625" above coil center line  
 E = 0.125" to 0.5625" below coil center line  
 C based on 1.50" flange.



Finned Length (FL)	Tube Supports
<48	0
>48 < 96	1
>96 < 144	2
>144	4